

# Access Your ID Card Online

**Did you know that you don't need your physical ID card to use your health benefits?**

You can access your Luminare Health ID card anytime, from anywhere (including your doctor's office) via:



**OR**

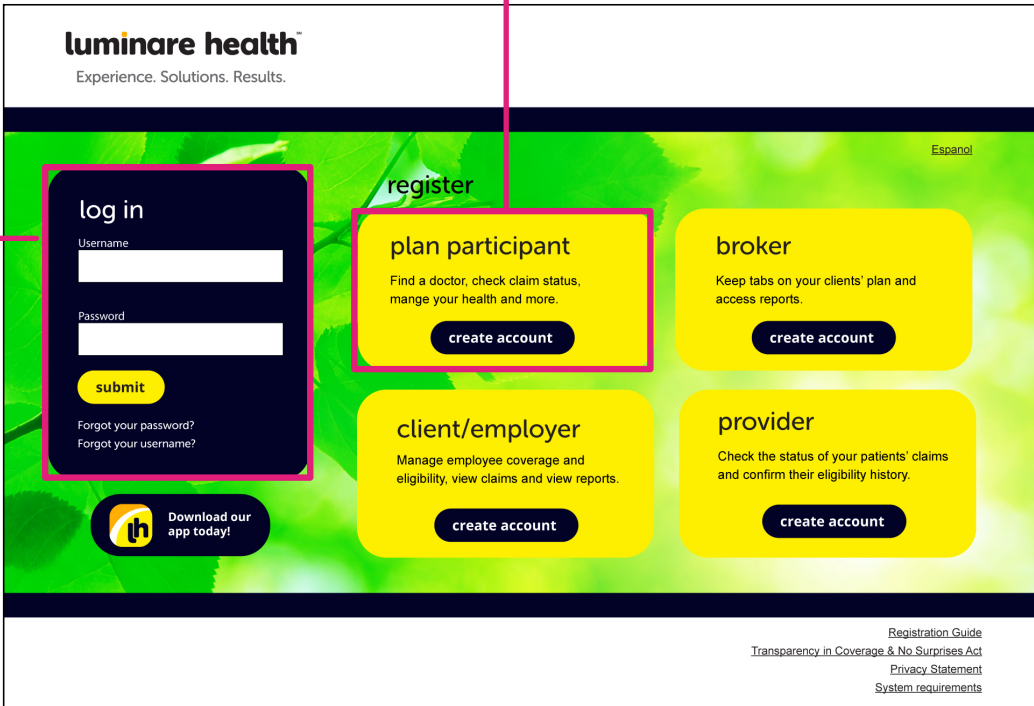


## Using myLuminareHealth.com Portal

### Step 1:

Go to **myLuminareHealth.com** and log in. If you've never used the portal before, you will have to complete a quick one-time registration process.

**Register**



The screenshot shows the Luminare Health registration page. At the top left is the Luminare Health logo with the tagline "Experience. Solutions. Results." and a link for "Español". The main content area is divided into a "log in" section on the left and a "register" section on the right. The "log in" section has fields for "Username" and "Password", a "submit" button, and links for "Forgot your password?" and "Forgot your username?". The "register" section has four options: "plan participant", "broker", "client/employer", and "provider", each with a "create account" button. A "Download our app today!" button is at the bottom left. At the bottom right, there are links for "Registration Guide", "Transparency in Coverage & No Surprises Act", "Privacy Statement", and "System requirements".

**Log in here** — points to the login form.

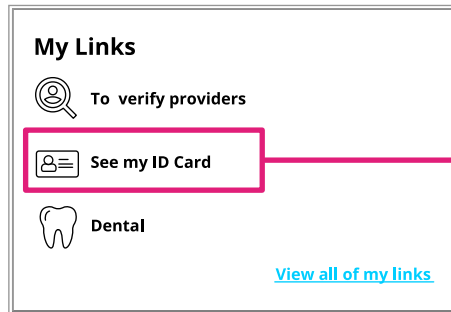
**Register** — points to the registration options.

# Using myLuminareHealth.com Portal (continued)

## Step 2:

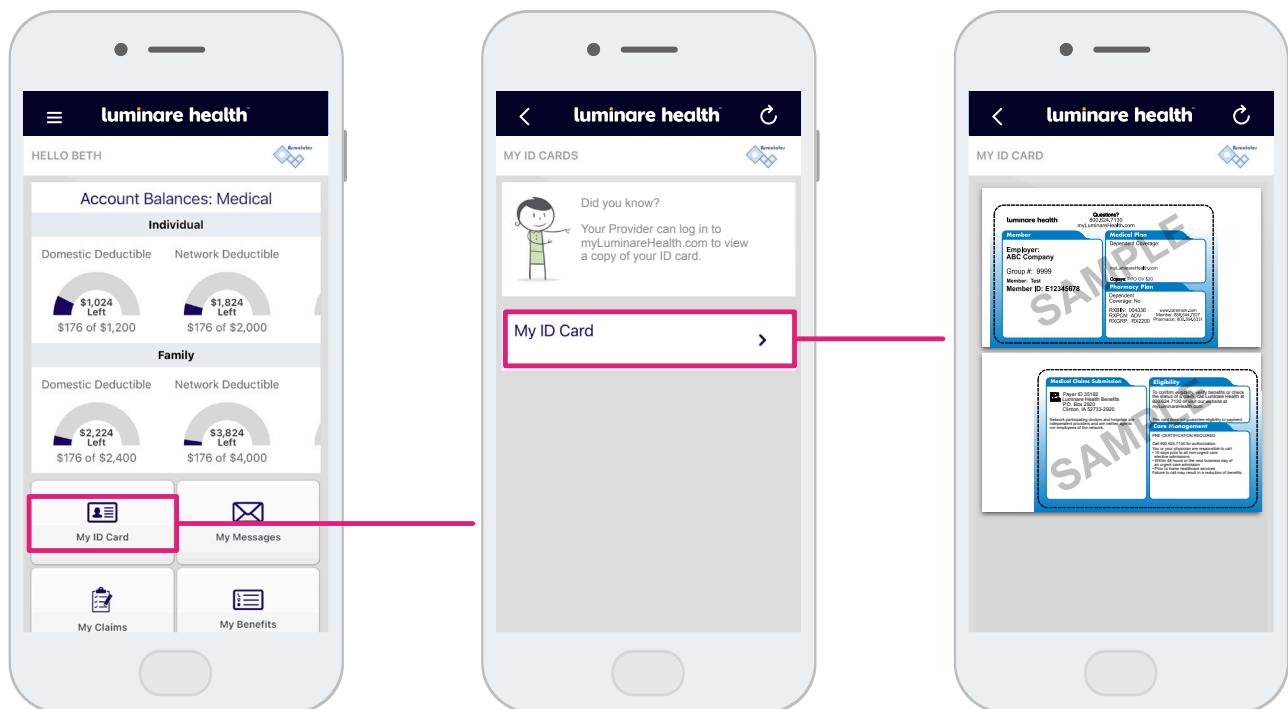
Go to the **My Links** section of your home page. Click the See My ID Card link.

**NOTE:** The links in your **My Links** section and the details on your ID card will vary depending on your specific plan benefits.



## Using myLuminareHealth Mobile App

You can also access your ID card via our mobile app, **myLuminareHealth Mobile**, available for free download from the Apple App Store or Google Play.



If you have any questions, just call the number at the top of your current ID card or send us a message via myLuminareHealth.com.